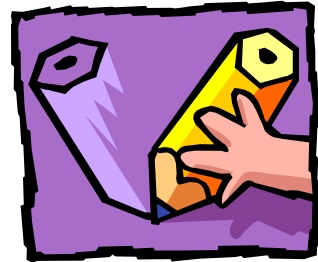


Kindergarten Supply List

2009-2010

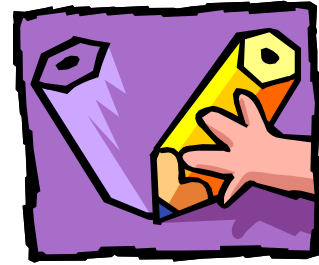


- 2 wide dry erase markers**
- 4 large glue sticks**
- 2 bottle of white glue (4 oz.)**
- 1 dozen #2 pencils (Sharpened)**
- 3 boxes 8 regular crayons**
- 1 box 24 regular crayons**
- 1 box washable broad-tip classic markers**
- 2 folders with 2 pockets across the bottom (one red, one blue)**
- 1 box facial tissue**
- gym shoes on PE days**
- supply box (preferably no larger than 6 x 9)**

**Supplies “run out” during the school year.
Please check with your child periodically to see if any need replacing.**

District 202 Elementary Schools

**Central ■ Charles Reed ■ Creekside ■ Crystal Lawns
Eagle Pointe ■ Eichelberger ■ Freedom ■ Grand Prairie
■ Lakewood Falls ■ Liberty ■ Lincoln ■ Meadow View ■ Ridge
River View ■ Thomas Jefferson ■ Walker's Grove ■ Wesmere**



Grade 1 Supply List

2009-2010

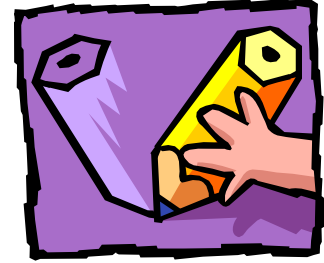
- 4 dry erase markers**
- 5 large glue sticks**
- 1 bottle of white glue (8 oz.)**
- 2 dozen #2 pencils (Sharpened)**
- 2 pink erasers**
- 2 boxes 24 regular crayons**
- 8 washable, broad-tip classic color markers**
- 2 highlighter, yellow with a chisel tip**
- 6 plain folders with 2 pockets across the bottom
(2 red, 2 green, 2 blue, with no 3 ring prongs)**
- 2 box facial tissue**
- 1 plastic supply box**
- 1 spiral notebook, 70 sheets, wide rule/wide lined**
- 1 old, clean sock**
- gym shoes on PE days**
- art shirt**
- 1 (12 box) colored pencils**

Supplies “run out” during the school year.

Please check with your child periodically to see if any need replacing.

District 202 Elementary Schools

Central ■ Charles Reed ■ Creekside ■ Crystal Lawns
Eagle Pointe ■ Eichelberger ■ Freedom ■ Grand Prairie
■ Lakewood Falls ■ Liberty ■ Lincoln ■ Meadow View ■ Ridge
River View ■ Thomas Jefferson ■ Walker's Grove ■ Wesmere



Grade 2 Supply List

2009-2010

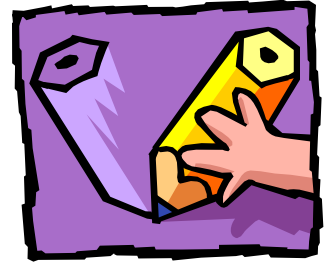
- 8 dry erase markers**
- 5 large glue sticks**
- 1 bottle of glue (8 oz.)**
- 2 dozen #2 pencils (Sharpened)**
- 2 boxes 24 crayons**
- 8 washable broad-tip classic color markers**
- 10 plain pocket folders, no clasps or prongs**
(2 red, 2 green, 2 blue, 2 purple, 2 yellow)
- 2 box facial tissue**
- 12 colored pencils (not mechanical)**
- 1 plastic supply box**
- 2 pink erasers**
- 2 yellow highlighter, chisel-tip**
- 4 spiral notebooks, 70 sheets, wide lined**
- 1 old, clean sock**
- gym shoes on PE days**
- 1 art shirt**

Supplies “run out” during the school year.

Please check with your child periodically to see if any need replacing.

District 202 Elementary Schools

- Central ■ Charles Reed ■ Creekside ■ Crystal Lawns**
Eagle Pointe ■ Eichelberger ■ Freedom ■ Grand Prairie
■ Lakewood Falls ■ Liberty ■ Lincoln ■ Meadow View ■ Ridge
River View ■ Thomas Jefferson ■ Walker's Grove ■ Wesmere



Grades 3, 4, 5 Supply List 2009-2010

- 2 dozen #2 pencils
- 6 pens (2 red, 2 black, 2 blue)
- 2 pink erasers
- 2 highlighters (2 different colors)
- 1 box of 24 crayons
- 8 washable broad-tip classic color markers
- 12 colored pencils
- 4 dry erase markers
- 4 glue sticks
- 1 bottle school glue (4 oz.)
- 1 plastic supply box
- 2 box facial tissue
- 6 folders with pockets – solid colors
- 2 folders with pockets AND prongs – solid colors
- 4 spiral notebooks, 70-100 pages, wide ruled
- 1 pack filler paper, wide ruled
- 2 package sticky notes (3" x 3")
- 1 pack 3" x 5" notecards – white and lined
- 1 old, clean sock
- 1 art shirt
- gym shoes on PE days

Supplies "run out" during the school year.

Please check with your child periodically to see if any need replacing.

District 202 Elementary Schools

Central ■ Charles Reed ■ Creekside ■ Crystal Lawns
Eagle Pointe ■ Eichelberger ■ Freedom ■ Grand Prairie
Lakewood Falls ■ Liberty ■ Lincoln ■ Meadow View ■ Ridge
River View ■ Thomas Jefferson ■ Walker's Grove ■ Wesmere